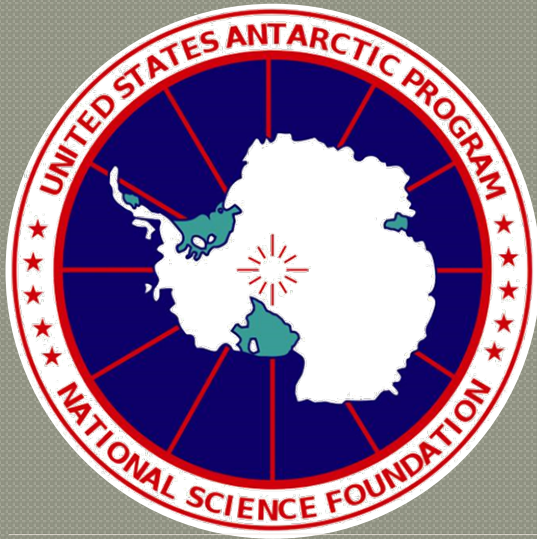


Skier 82 Whiteout Landing

19 Jan 2015

Jeffrey Johnson
Chief Meteorologist
Scientific Research Corporation

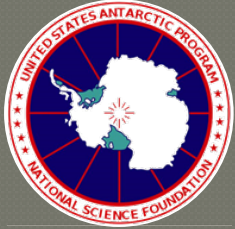




Skier 82 Whiteout Landing

19 Jan 2015

- Overview
- Sequence of Events
- Satellite Imagery
- AMPS Prediction
 - Initialization
 - Panels & Meteograms
- Webcam Imagery
- Observations
- Findings/Lessons Learned



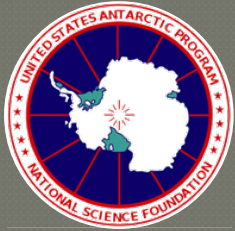
Overview

- On 18 Jan, 2015, LC-130 Skier 82 departed Christchurch southbound for Williams Field. The initial forecast was for favorable conditions, with snow and blowing snow beginning late evening, after their arrival.
- Through PSR, the weather appeared to be cooperating, but began taking a turn for the worse once SK82 was a little more than halfway (but past PSR) to McMurdo.



Overview –continued

- When the aircraft arrived, conditions had deteriorated in snow and blowing snow, forcing the aircraft to make a landing in the Whiteout Area.



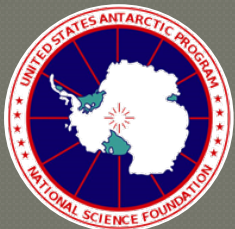
Sequence of Events

- ◉ Departed NZCH 18/2204Z
- ◉ ETA @ NZWD: 19/0505Z
- ◉ PSR: 19/0132Z (forecast passed at 19/0032Z)
 - FEW030 BKN080 OVC150 9999
 - BECMG 1904/1906: FEW015 SCT030 BKN050 OVC080 9999 VCSN TRACE RIME ICG 070-050 DURGD

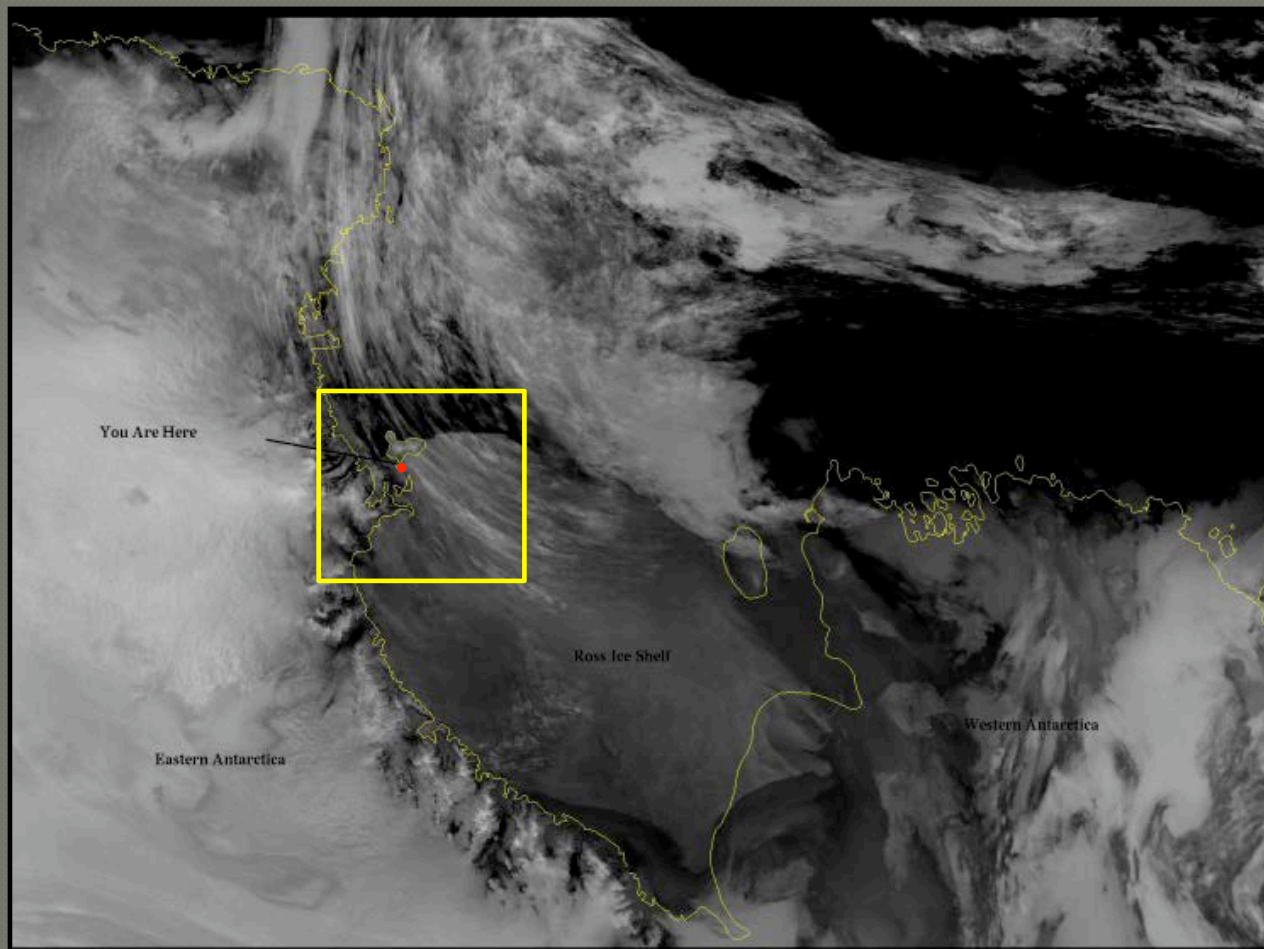


Sequence of Events

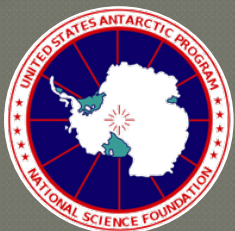
- ATA (in Whiteout Area): 19/0622Z
 - SPECI NZWD 190614Z 18021KT 1000 -SN
OVC015 SDN/HDN=
 - Winds out of tolerance for Primary RWY landing,
VIS out of tolerance for landing at XWIND
runway
- Significant Items:
 - Satellite **blackout** 18/2008Z – 19/0245Z
 - METAR ZWDA 190230Z AUTO 13013KT 9999
FEW018 OVC032= (1st obs below VFR, ACFT
already past PSR at this point)



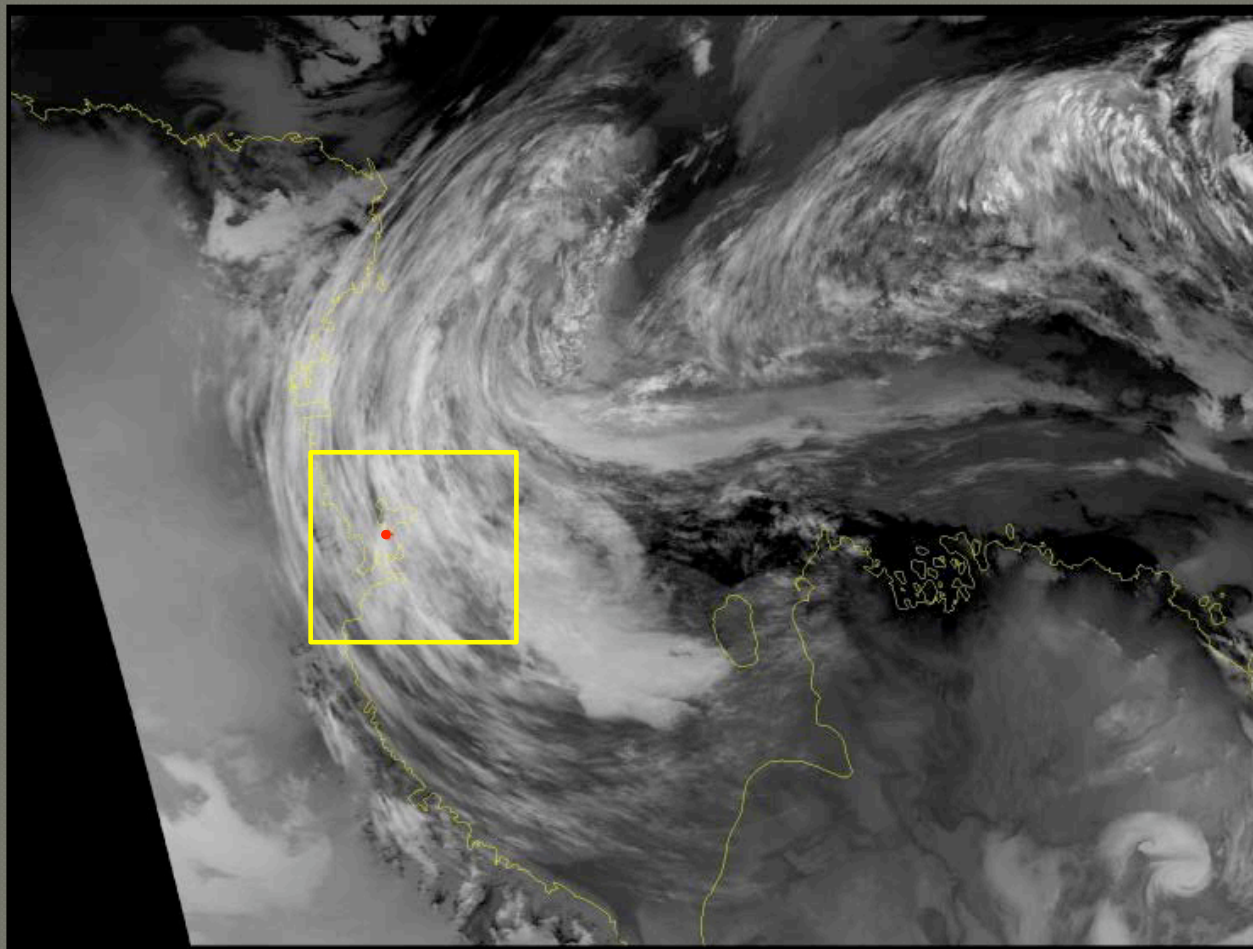
Satellite Imagery



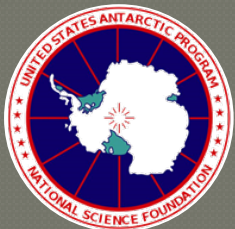
18/1300Z



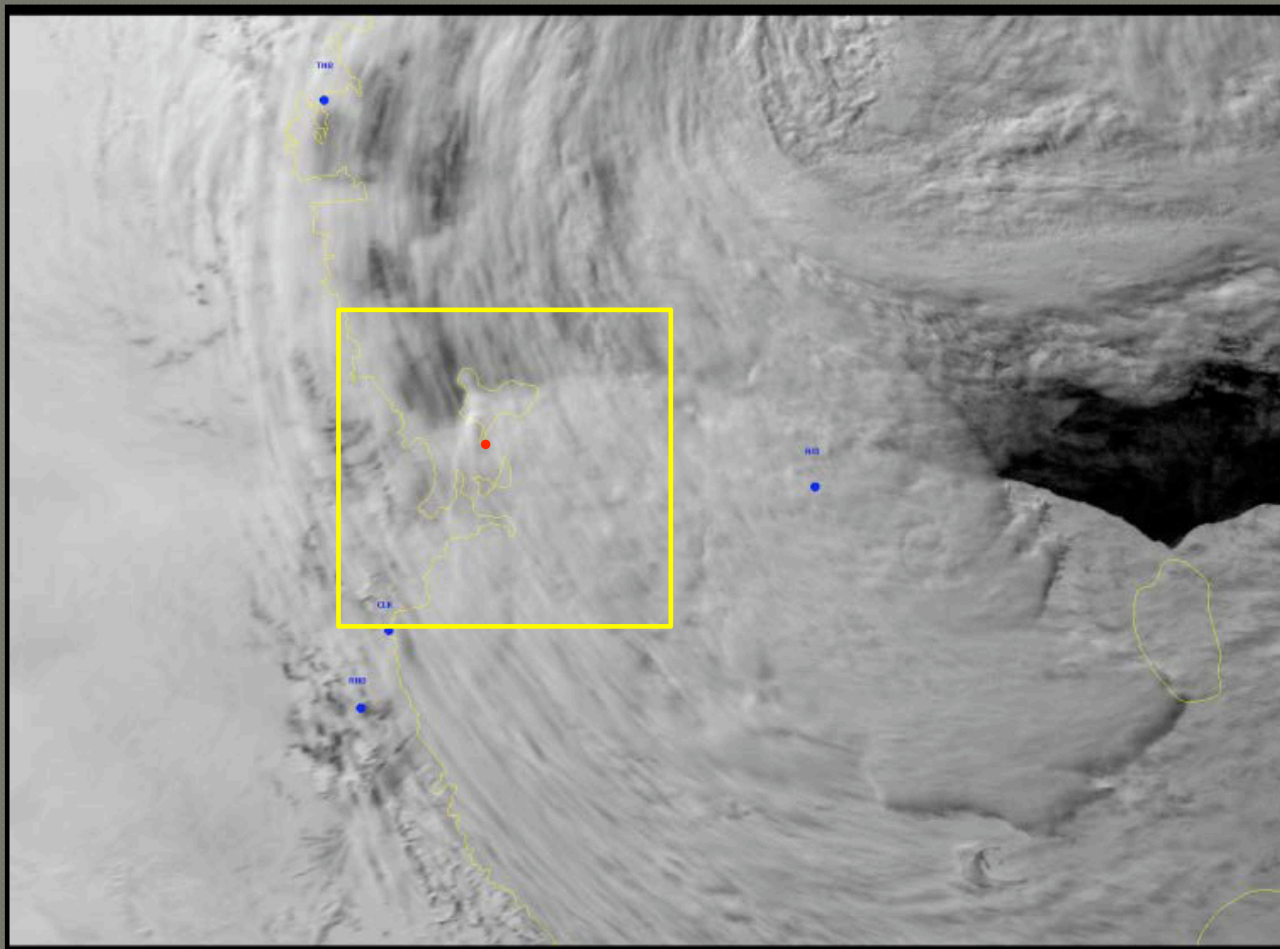
Satellite Imagery



19/0245Z



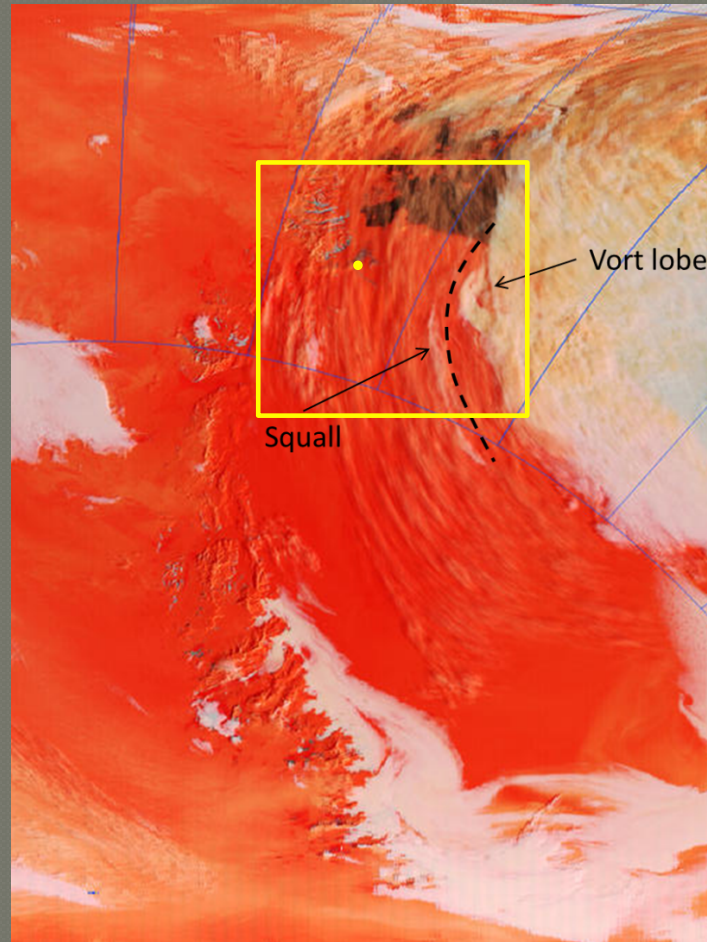
Satellite Imagery



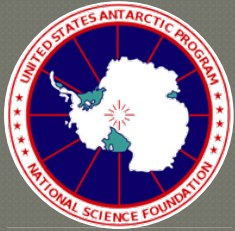
19/0245Z



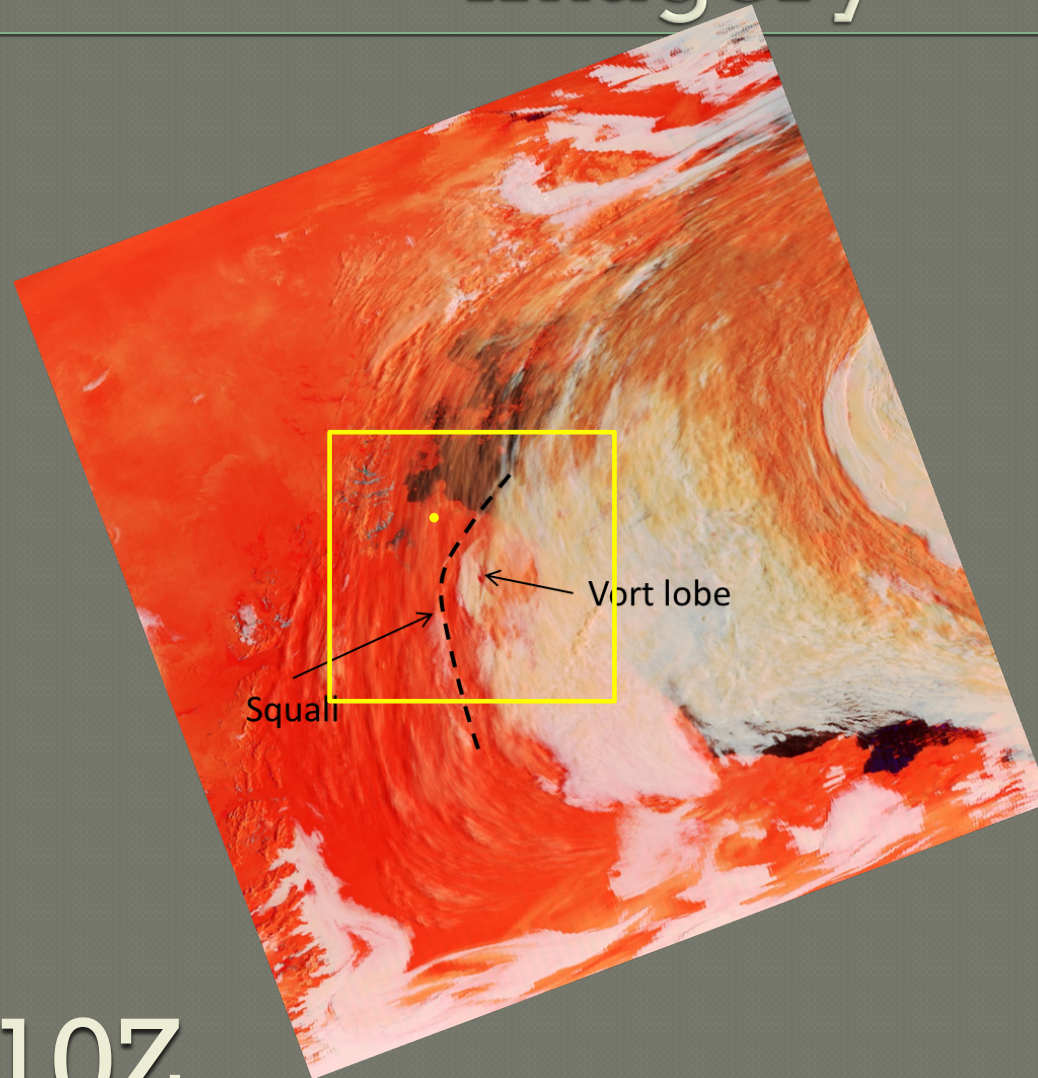
Enhanced Satellite Imagery



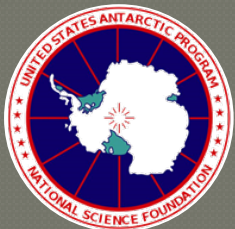
18/1835Z



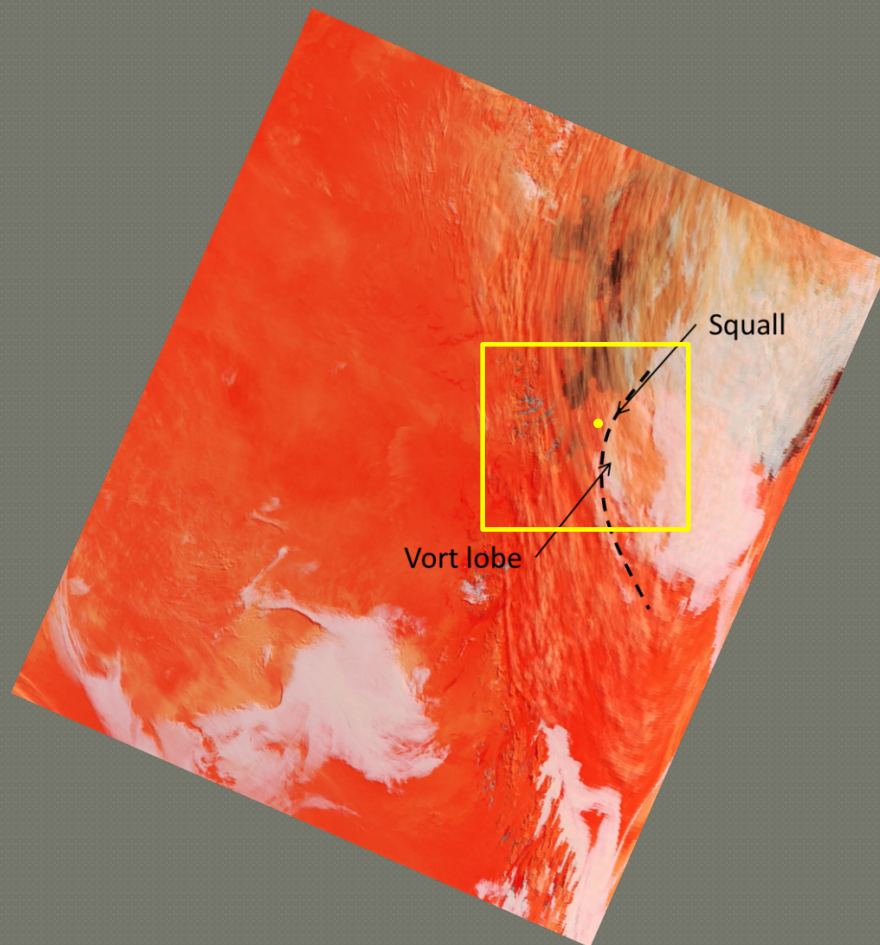
Enhanced Satellite Imagery



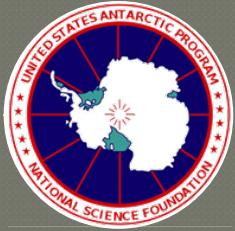
18/2010Z



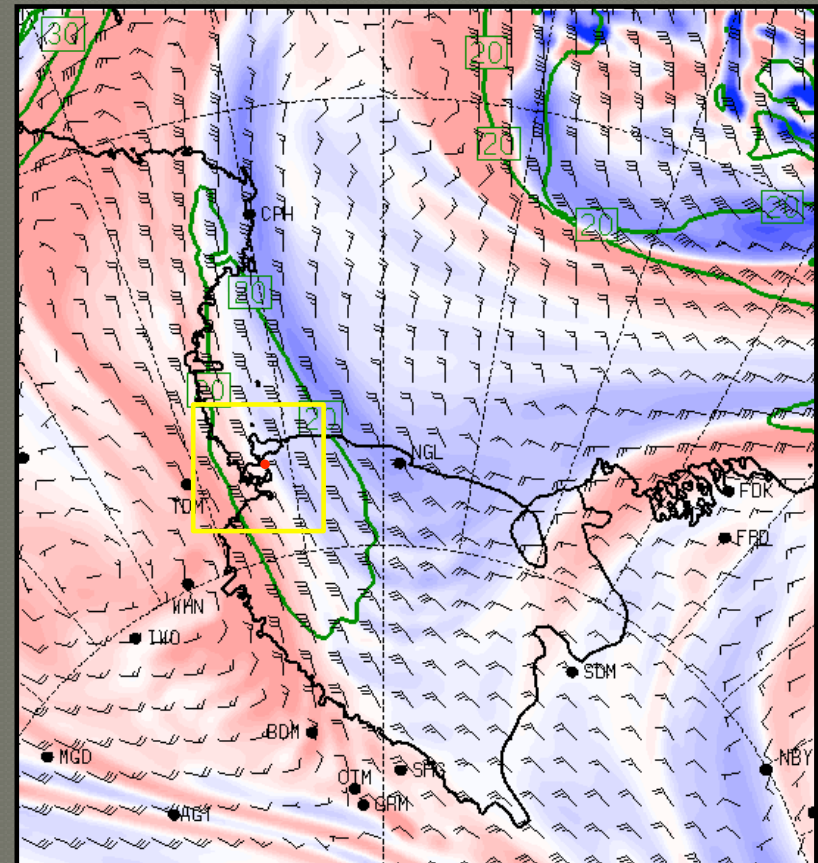
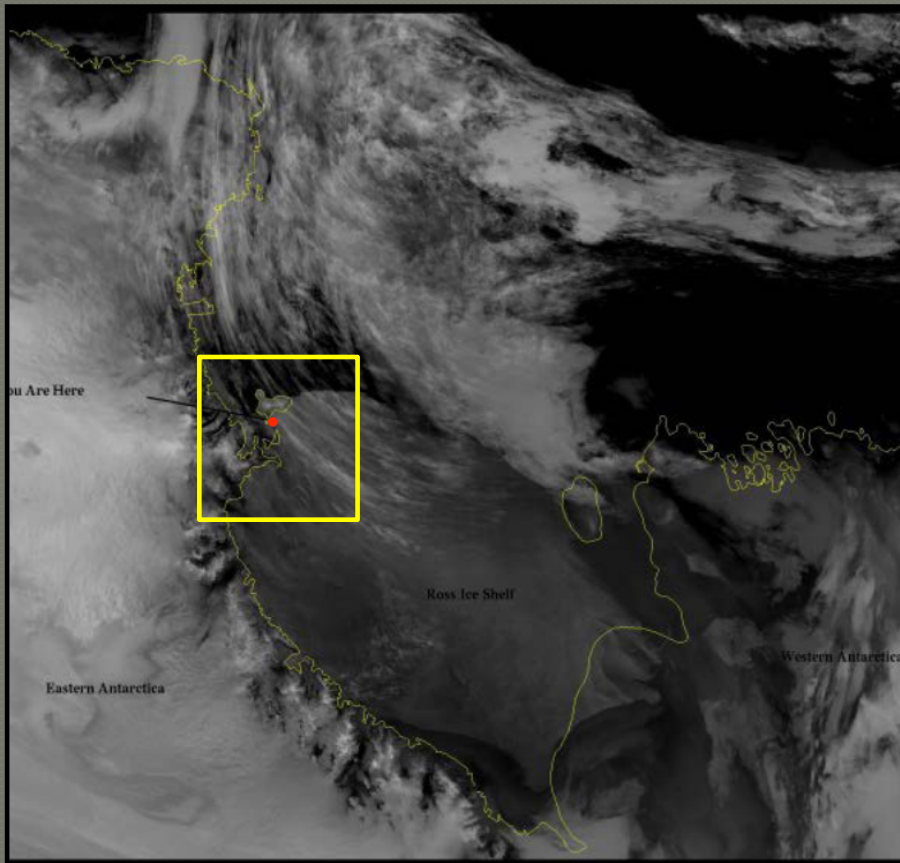
Enhanced Satellite Imagery



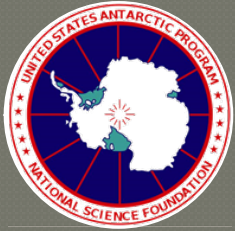
18/2150Z



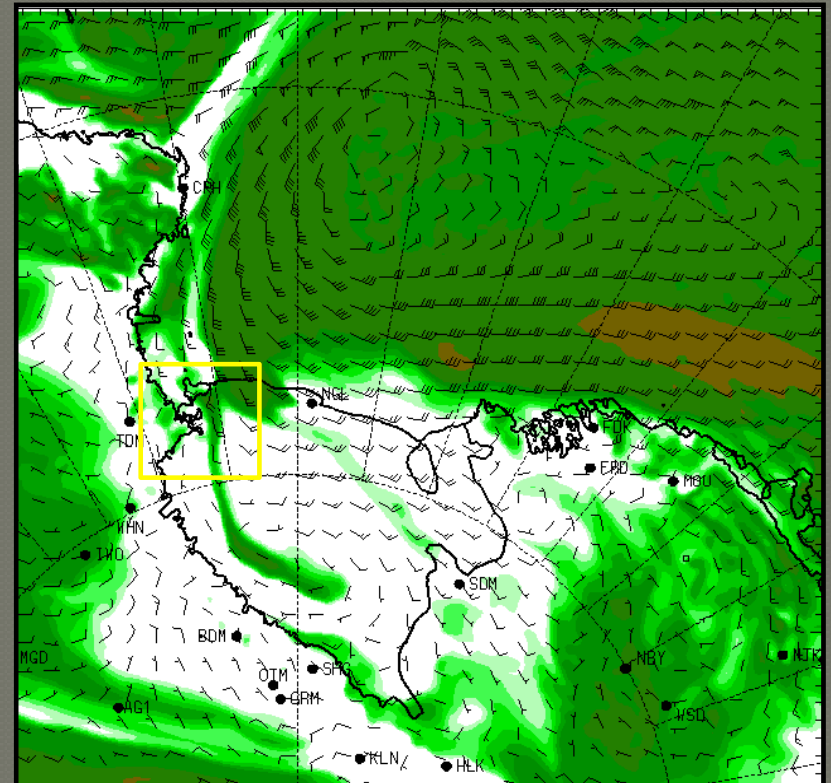
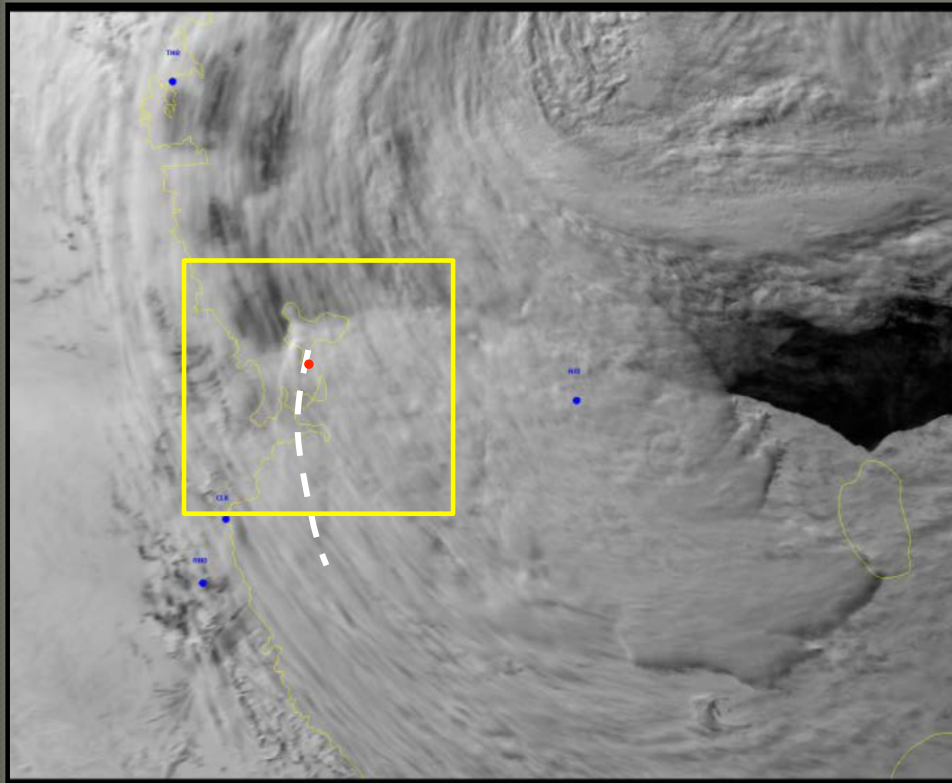
AMPS Prediction



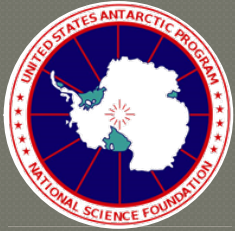
18/1500Z



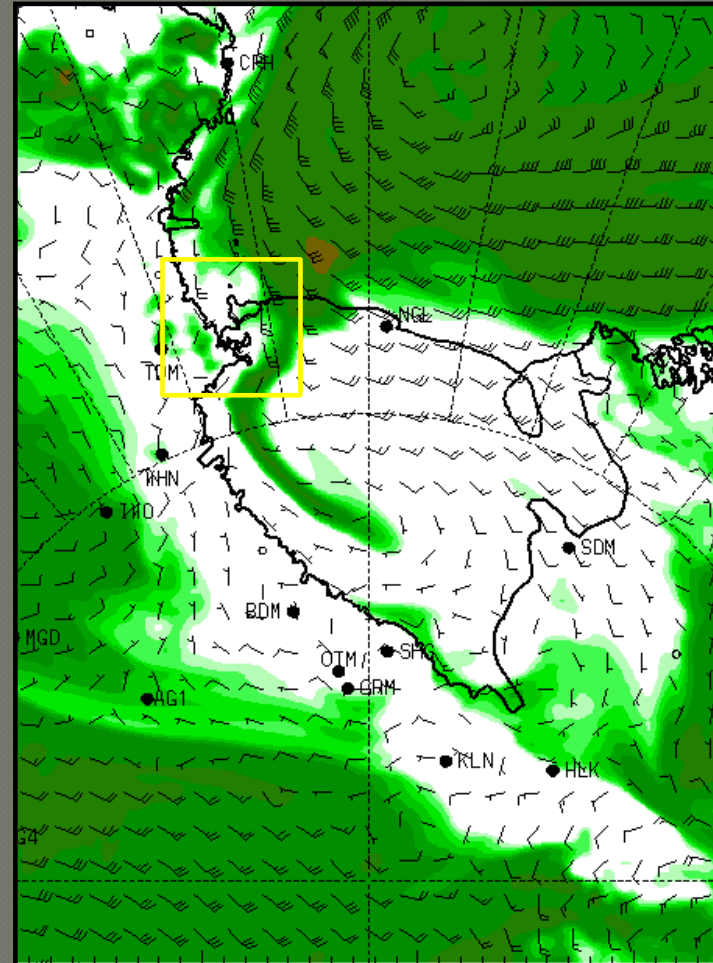
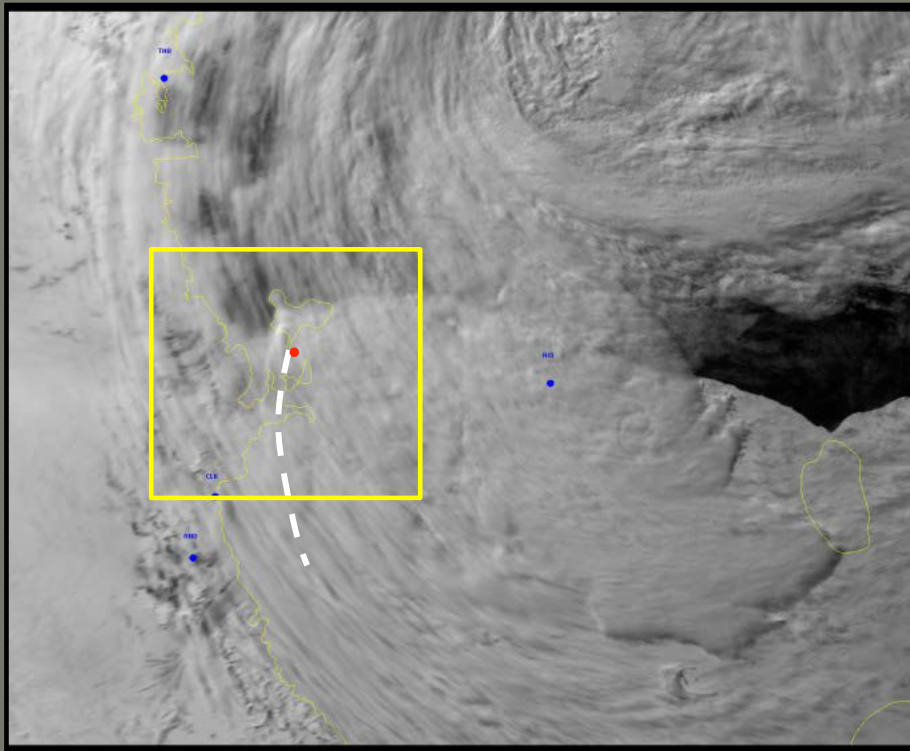
AMPS Prediction



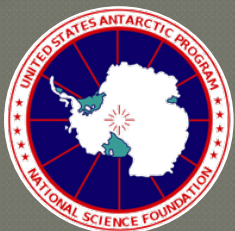
19/0300Z



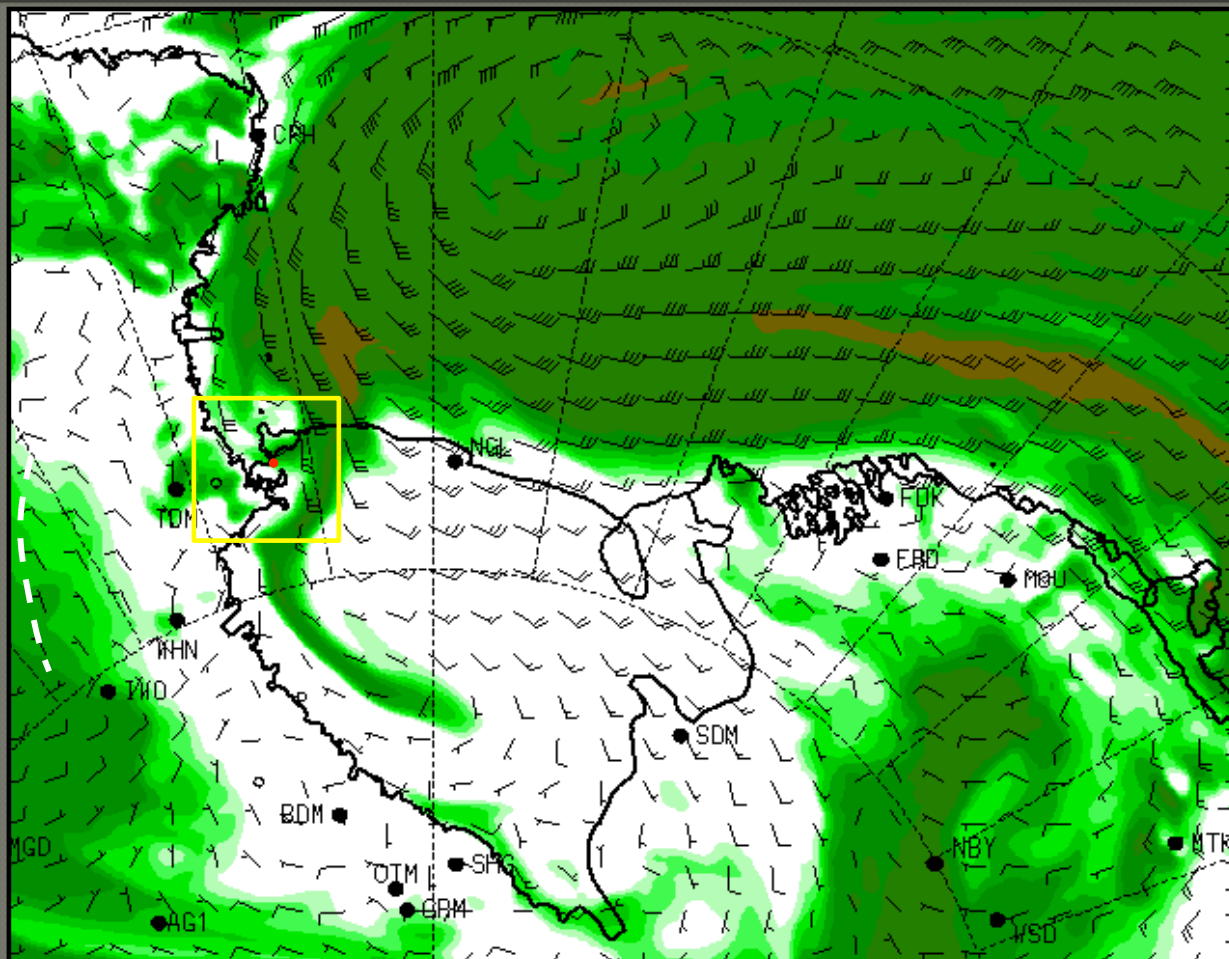
AMPS Prediction



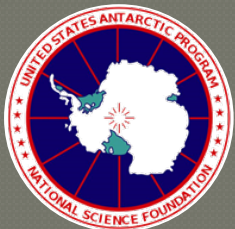
19/0300Z (12Z run)



AMPS Prediction



19/03Z (00Z run)



North Crevase Webcam



IC104_N_CREVASSE JAN 19, 2015 10:35 269K



- Mid-deck seemingly was right on time according to AMPS projections, though precipitation was following much closer behind than anticipated.
- While webcam is an excellent MISSIONWATCH tool in an event like this, its impact in the issuance of the PSR forecasts and the GO—NO GO call could have been largely insignificant, due to the timing of the PSR contacts and the rapidity at which snow & reduced visibility entered the area (~30 to 60 minutes before NZWD).



Williams Field Observations

METAR NZWD 190155Z 13014KT 9999 -SN BKN030 OVC045 M07/M11
A2913=

SPECI NZWD 190238Z 14012KT 4000 -SN BKN020 OVC030 M07/M09 A2915=

METAR NZWD 190255Z 17005KT 3200 -SN BKN015 OVC020 M06/M09
A2915=

SPECI NZWD 190323Z 18015KT 2000 -SN BKN015 OVC020 M06/M09 A2915=

SPECI NZWD 190330Z 17013KT 1000 -SN BKN015 OVC020 M06/M09 A2915=

METAR NZWD 190355Z 18018KT 1000 -SN OVC015 M06/M08 A2915=

SPECI NZWD 190422Z 18019KT 1000 -SN VV011 M06/M08 A2916=

SPECI NZWD 190437Z 18020KT 1000 -SN VV012 M06/M09 A2917=

METAR NZWD 190455Z 18020KT 1000 -SN VV012 M06/M08 A2917=

METAR NZWD 190555Z 17018KT 1000 -SN OVC015 M06/M09 A2919=

SPECI NZWD 190614Z 18021KT 1000 -SN OVC015 M06/M08 A2920=

METAR NZWD 190655Z 17018KT 1000 -SN VV010 M06/M09 A2921=



Pegasus Field Observations

METAR NZPG 190355Z 16018KT 3200 -SN BKN020 OVC030 M06/M08 A2916=

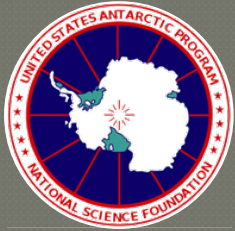
SPECI NZPG 190405Z 16018KT 3200 -SN FEW010 BKN020 OVC030 M06/M08
A2917=

SPECI NZPG 190418Z 16017KT 2400 -SN FEW010 SCT020 OVC030 M06/M09
A2917=

SPECI NZPG 190435Z 16018KT 2400 -SN FEW010 SCT020 OVC030 M06/M09
A2918=

METAR NZPG 190455Z 16021G26KT 2400 -SN FEW010 SCT020 OVC030 M06/
M09 A2918=

SPECI NZPG 190510Z 17018KT 2400 -SN FEW010 SCT020 OVC030 M06/M09



Pegasus Field Observations

SPECI NZPG 190510Z 17018KT 2400 -SN FEW010 SCT020 OVC030 M06/M09
A2918=

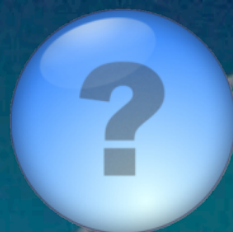
SPECI NZPG 190525Z 16020KT 2400 -SN FEW010 SCT025 OVC030 M06/M09
A2919=

SPECI NZPG 190540Z 16020KT 2400 -SN SCT025 BKN030 OVC035 M06/M09
A2919=

METAR NZPG 190555Z 16018KT 9000 -SN SCT025 BKN030 OVC035 M06/M09
A2920=

SPECI NZPG 190610Z 16018KT 9000 -SN FEW010 SCT025 OVC035 M06/M09
A2921=

SPECI NZPG 190625Z 17016KT 8000 -SN SCT025 BKN030 OVC035 M06/M09
A2921=



Contact Information

Scientific Research Corp
1101 Remount Rd, Ste 500
N Charleston, SC 29406

Phone: 843-740-3305
Fax: 843-740-7702

Weather.CHS@usap.gov
jejohnson@scires.com
jeffrey.johnson.contractor@usap.gov
<http://scires.com>